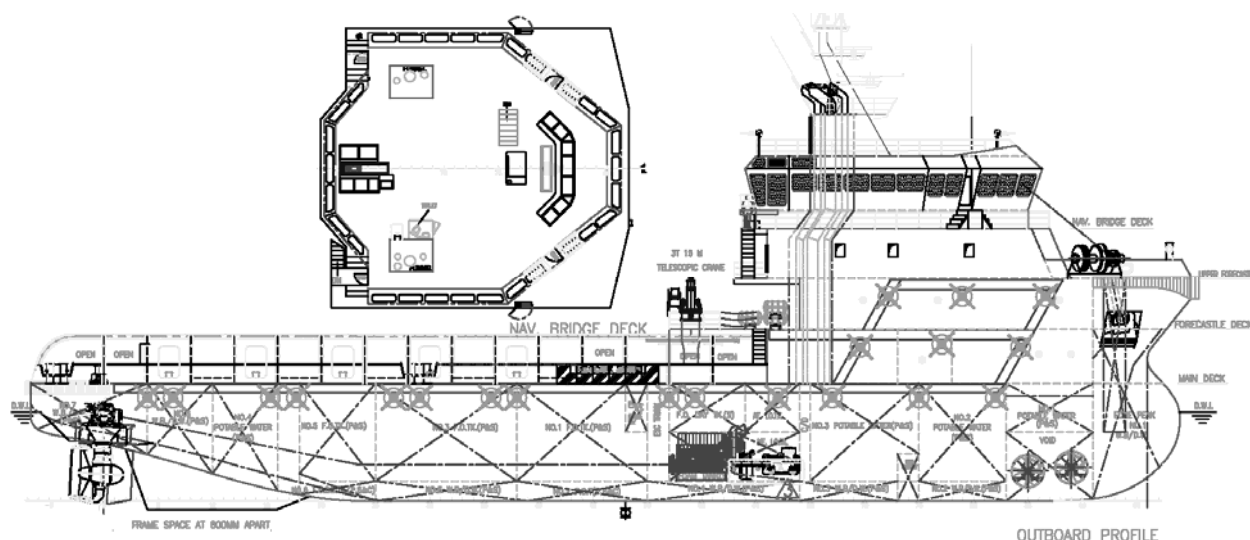


## 64M Platform Support Vessel (Supply) DPS 2



Classification Society :	ABS
Notations :	⌘A1, ⌘AMS, ⓔ Offshore Support Vessel (Supply-HNLS, DPS-2, ACCU, FFV1, OSR-C1) SPS

### PRINCIPAL PARTICULARS

Length overall	64.00 M
Length BP	57.60 M
Beam Molded	16.00 M
Depth Molded	6.50 M
Designed Draft	4.90 M
Dead Weight	~2000 Ton
Complement	60 Men
Speed @ design draft	~ 13 Kts

### CARGO DECK

Deck Loading	7 Ton/ M <sup>2</sup>
Clear Deck Area (~13mx~38.5m)	~500 M <sup>2</sup>
Deck Cargo	~600 Ton

### PROPULSION SYSTEMS

Main Engine	2 x Yanmar 6EY 26, 1920 Kw
Azimuth	2 x Schottel SRP 1515 CP
Bow thruster	2 x Schottel STT3CP 10 Ton

### CARGO PUMPS

Cargo Fuel Oil	1 x 150
Cargo Fresh Water	1 x 150
Cargo Drill water	1 x 150
Liquid Mud	2 x 100
Methanol	2 x 25
Fuel Oil Transfer	2 x 10

### CARGO TANK CAPACITIES

Fuel Oil	~590 M <sup>3</sup>
Portable Water	~430 M <sup>3</sup>
Drill & Ballast Water	~600 M <sup>3</sup>
Mud, Brine & Recovered Oil	~400 M <sup>3</sup>
Bulk Cement	~170 M <sup>3</sup>
Methanol	~ 80 M <sup>3</sup>

### OTHER TANK CAPACITIES

Lube Oil	~10 M <sup>3</sup>
Hydraulic Oil	~10 M <sup>3</sup>
Foam	~13 M <sup>3</sup>
Bilge Holding	~11 M <sup>3</sup>
Dirty Oil	~11 M <sup>3</sup>

### ELECTRICAL SYSTEMS

Diesel Gen	3 x Cat C18, 450 ekW
Shaft Gen	2 x Stamford 1012 kW
Emerg. Gen	1 x Cat C6.6, 118 ekW

### FIRE/BILGE/BALLAST PUMPS

Bilge/Ballast	1 x 80 M <sup>3</sup> /hr @80M
GS/Fire Fighting	1 x 80 M <sup>3</sup> /hr @80M
Cement	1 x 50 M <sup>3</sup> /hr @30M
Daily Bilge	1 x 2 M <sup>3</sup> /hr @25M
Emergency Fire	2 x 35 M <sup>3</sup> /hr @60M
Steering	2 x 50 M <sup>3</sup> /hr @30M
Dirty Oil	1 x 5 M <sup>3</sup> /hr @4.5bar
Sludge	1 x 5 M <sup>3</sup> /hr @4.5bar

### SEAWATER COOLING PUMPS

M. Engine/Azimuth	4 x 95M <sup>3</sup> /hr @45M
Main Air Conditioner	2 x 90M <sup>3</sup> /hr @30M
Refrigerator	2 x 8M <sup>3</sup> /hr @30M
Cement compressor	2 x 15M <sup>3</sup> /hr @60M
Mud/Oro Power pack	2 x 15M <sup>3</sup> /hr @40M
D/Machinery P/ Pack	2 x 15M <sup>3</sup> /hr @30M
FW Pressure set	2 x 5M <sup>3</sup> /hr @35M
SW Pressure Set	2 x 5M <sup>3</sup> /hr @35M
Hot water Circulation	2 x 5M <sup>3</sup> /hr @35M

### DECK MACHINERY (ZICOM)

Windlass/	2 x 10Ton @ 9M/min
Mooring winch	6Ton @ 15M/min
Capstan	2 x 5Ton @ 15M/min
Tugger winch	2 x 10Ton @ 15M/min
Deck Crane	1 x 3Ton@13M / 5Ton@9M

### NAVIGATION EQUIPMENT

Radars (Furuno)	X-band, S-band & slave
Gyro Compass (Tokimec)	3 units
Magnetic Compass	1 unit
Echo Sounder (Furuno)	1 main & 1 repeater
Doppler Sonar (Furuno)	1 main & 2 repeaters
Auto Pilot (Raytheon)	1 unit
DGPS (Furuno)	1 unit for navigation
Weather Fax (Furuno)	1 unit
Navtex (Furuno)	1 unit
EPIRP	1 unit
SART	2 units
AIS (Furuno)	1 unit
BNWAS (Stein Sohn)	1 unit

### OTHER EQUIPMENT

Starting Air Compressors	2 x 24 M <sup>3</sup> /hr
Oily Water Separator	1 x 1 M <sup>3</sup> /hr
Sewage Treatment Plant	1 x 60 men
Water maker	1 x 15 Ton/day
Mud Agitator (Allweiler)	6 units
Main Air Conditioner	100% Redundancy
Refrigerator	100% Redundancy
10 men 20kts Fast Rescue Boat	1 unit

### DYNAMIC POSITIONING SYSTEM

L3 Dynamic Positioning & Control System with	
DGPS (Fugro)	2 units
Range & Bearing Sensor (Cyscan)	1 unit
Gyro Compass (Tokimec)	3 units
VRU (TSS)	2 units
Wind Sensor (RM Young)	3 units
UPS	2 units

### EX-FIFI SYSTEM (JASON)

Fire Pump	2 x units
Monitor (foam & water)	2 x units
Water Curtain	1 set
Oil Dispersant 2 nozzles	2 sets

### COMMUNICATION EQUIPMENT

Radio Station Inmarsat C (Furuno)	2 sets
Sound Powered Telephone (Furuno)	1 set
Auto Telephone	1 set
PA / Talk Back	1 set
Portable VHF	3 sets

### ACCOMMODATION

One Man Cabin	4 x 1
Two Men Cabin	6 x 2
Four Men Cabin	+ 11 x 4
Total Complement	<u>60</u>
Prayer Room	1
Mess Room	1
Recreation Room	1
Office	1
Changing Room	1

Alarm & Monitoring (Kongsberg)	1 set
Dead Man Alarm (Kongsberg)	1 set
Trim/List Monitoring (Kongsberg)	1 set
Tank Gauging (Kongsberg)	1 set
Fuel Consumption Monitor (Kongsberg)	1 set
CCTV in ECR for Machinery space	1 set
CCTV in Wheelhouse for Access	1 set
Toxic Gas Detection 5 points	1 set
Sea Chest Antifouling Impressed Current Sys	1 set

Note: The above information are for references only and may subject to changes without prior notice