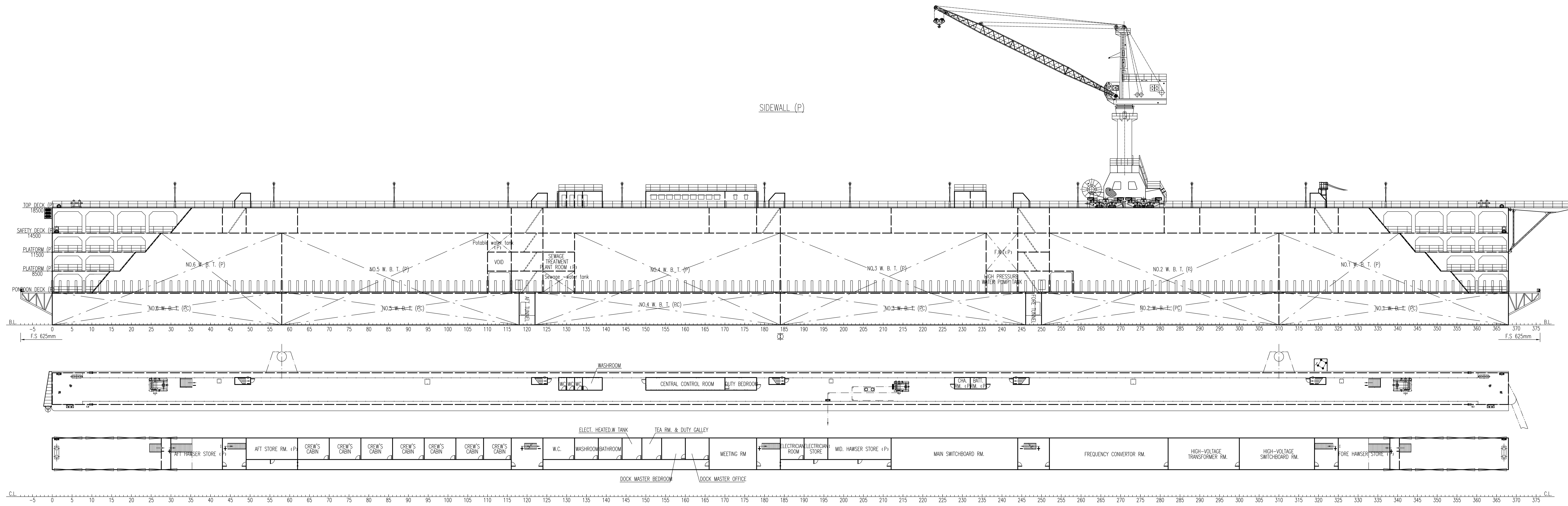


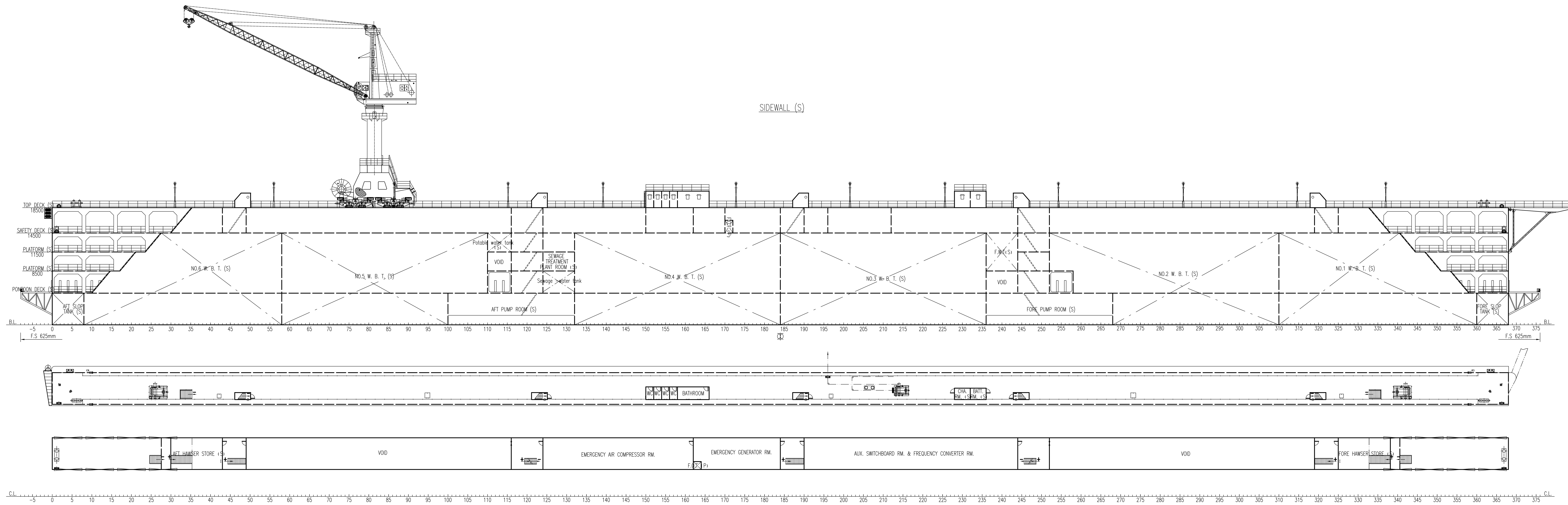
PRINCIPAL DIMENSIONS

TYPE	CAISSON
LIFTING CAPACITY	28,000 t
LENGTH OVER END PLATFORMS	240.00 m
LENGTH OVER PONTOON	230.00 m
BREADTH OF PONTOON	49.00 m
BREADTH BETWEEN INSIDE WING WALLS	40.00 m
CLEAR WIDTH BETWEEN FENDERS	38.30 m
WIDTH OF WING WALL	4.50 m
DEPTH OF PONTOON AT CENTER LINE	5.00 m
DEPTH OF PONTOON AT INNER WING WALLS	4.80 m
DEPTH FROM BASELINE TO TOP DECK	18.00 m
DEPTH FROM BASELINE TO SAFETY DECK	14.00 m
DESIGNED WORKING DRAFT	4.45 m
DESIGNED IMMERSION DRAFT	15.50 m
WATER DEPTH ABOVE KEEL BLOCKS WHEN IMMERSION	9.00 m
HEIGHT OF KEEL BLOCKS	1.50 m
FRAME SPACING	0.625 m
BALLAST DISCHARGING TIME FOR A 28,000t SHIP	150 min
MAIN DEBALLAST PUMP	8 sets
CRANES	30 t x 30 m x 2 sets
CLASSNOTATION	KE Ⓢ Floating Dock

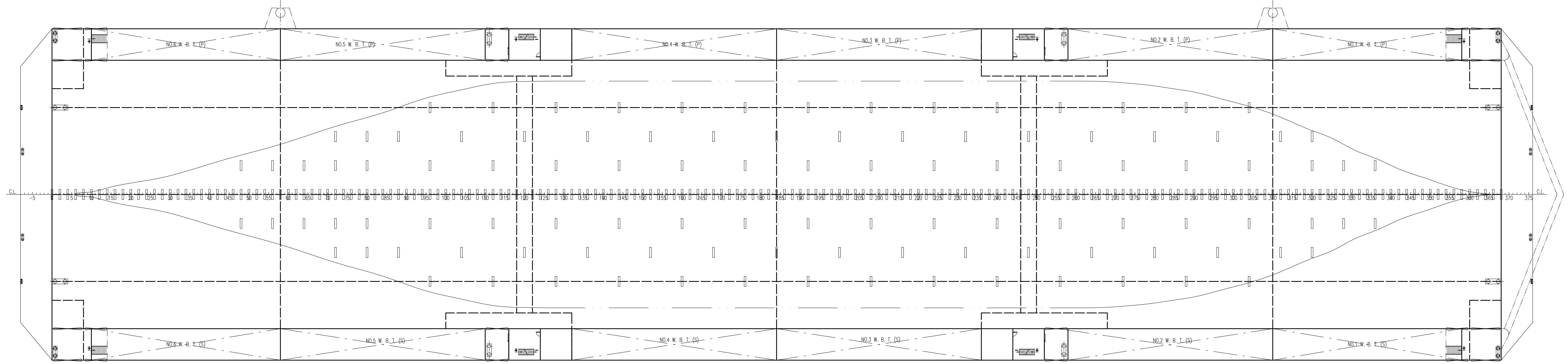
船东 CLINET:	28000t LC FLOATING DOCK	CLASS: RS	详细设计 DETAIL DESIGN
船厂 BUILDER:	TITLE: GENERAL ARRANGEMENT	HULL No.:	图号 DWG NO: HH910-020-02
设计 DESIGNED SUN H.L.		页码 SHEET 1/5	比例 SCALE 1:250
校对 CHECKED		版本 REV. 0	
审核 CONFIRMED		上海宏航船舶技术有限公司 SHANGHAI HONGHANG SHIP TECHNOLOGY CO.,LTD Website: http://www.honghangmarine.com	
审定 APPROVED		Tel:+86(021-51702766 Fax:+86(021-51702267	
日期 DATE 2015.8.13			



比例: 0.5H



PONTOON DECK



BOTTOM

